

South Kyle II Wind Farm

Figure 5.37a Viewpoint 13: Cairnsmore of Carsphairn (Night)

- Proposed development
- Operational/under construction wind farm
- Consented wind farm
- Other proposed wind farm

VATTENFALL

natural power

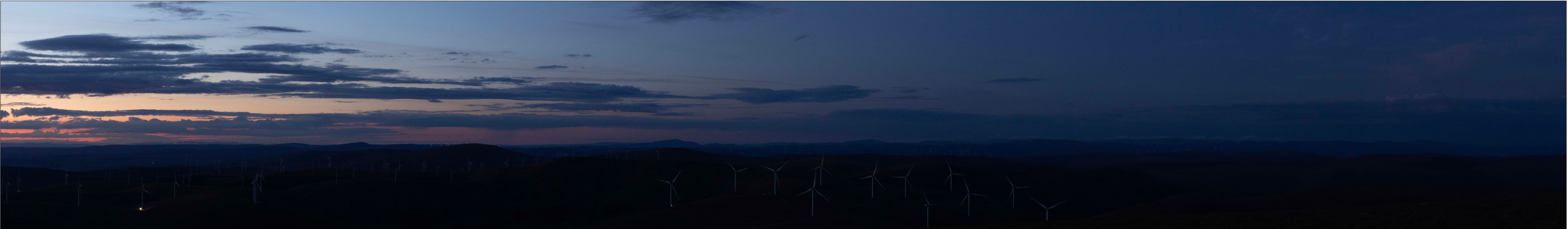
OS reference: 259357E 598170N
Eye level: 792 m AOD
Direction to centre of photograph: 321°
Principal distance: 522 m

Horizontal field of view: 90° (cylindrical projection)
Vertical field of view: 14.2°
Paper size: 841 x 297 mm (half A1)
Correct printed image size: 820 x 130 mm

Camera: Canon EOS 1ds Mk III
Lens: 50 mm f1.8
Camera height: 1.5 m AGL
Date and time of photograph: 08/07/2024 23:00

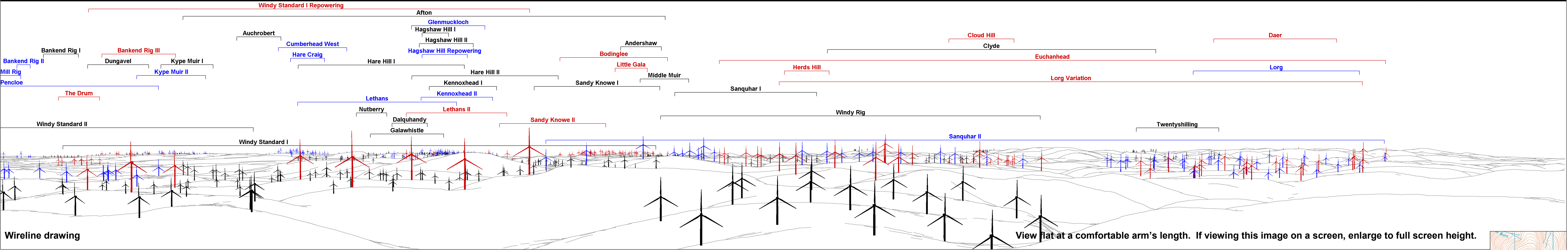
Nearest South Kyle II turbine: T10
Minimum distance to South Kyle II: 9.2 km
Theoretical number of South Kyle II tips visible: 11
Theoretical number of South Kyle II hubs visible: 11

GB001396_V_050_V_LH 25-03-25_LWA_VP_030_A



Baseline photograph

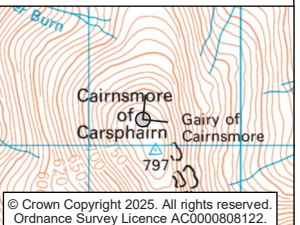
This image provides landscape & visual context only.



South Kyle II Wind Farm
Figure 5.37b Viewpoint 13: Cairnsmore of Carsphairn (Night)

- Operational/under construction wind farm
- Consented wind farm
- Other proposed wind farm

VATTENFALL	natural power	OS reference:	259357E 598170N	Horizontal field of view:	90° (cylindrical projection)	Camera:	Canon EOS 1ds Mk III
		Eye level:	792 m AOD	Vertical field of view:	14.2°	Lens:	50 mm f1.8
		Direction to centre of photograph:	51°	Paper size:	841 x 297 mm (half A1)	Camera height:	1.5 m AGL
		Principal distance:	522 mm	Correct printed image size:	820 x 130 mm	Date and time of photograph:	08/07/2024 23:00





Baseline photograph

This image provides landscape & visual context only.



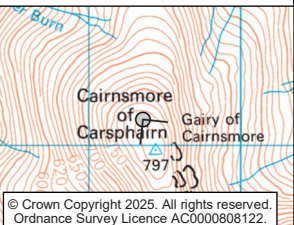
Wireline drawing

View flat at a comfortable arm's length. If viewing this image on a screen, enlarge to full screen height.

South Kyle II Wind Farm
Figure 5.37c Viewpoint 13: Cairnsmore of Carsphairn (Night)

- Operational/under construction wind farm
- Consented wind farm
- Other proposed wind farm

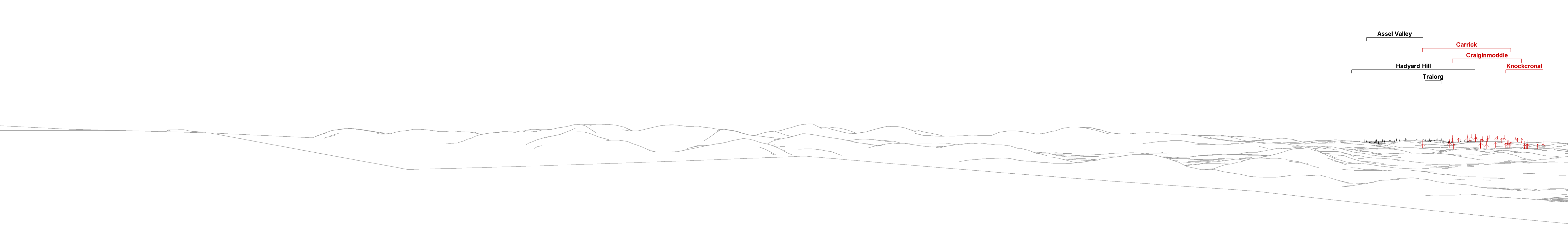
VATTENFALL	natural power	OS reference:	259357E 598170N	Horizontal field of view:	90° (cylindrical projection)	Camera:	Canon EOS 1ds Mk III
		Eye level:	792 m AOD	Vertical field of view:	14.2°	Lens:	50 mm f1.8
		Direction to centre of photograph:	141°	Paper size:	841 x 297 mm (half A1)	Camera height:	1.5 m AGL
		Principal distance:	522 mm	Correct printed image size:	820 x 130 mm	Date and time of photograph:	08/07/2024 23:00



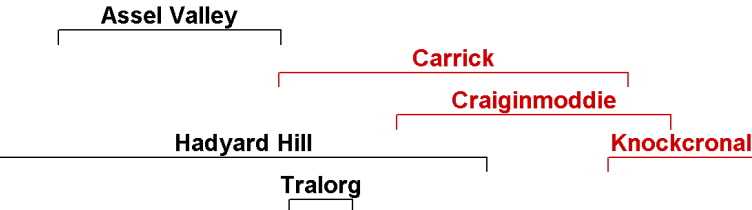


Baseline photograph

This image provides landscape & visual context only.



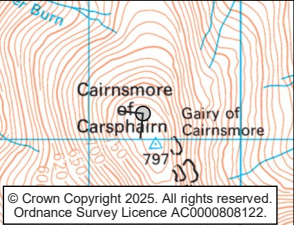
Wireline drawing

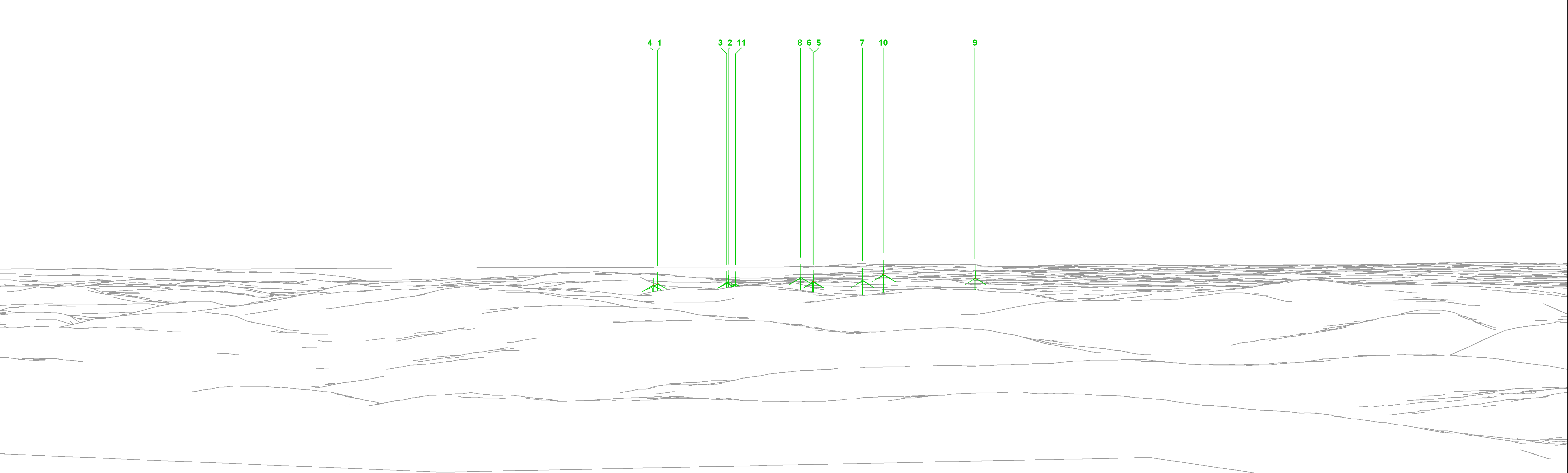


South Kyle II Wind Farm
Figure 5.37d Viewpoint 13: Cairnsmore of Carsphairn (Night)

- Operational/under construction wind farm
- Other proposed wind farm

VATTENFALL		View flat at a comfortable arm's length. If viewing this image on a screen, enlarge to full screen height.					
		OS reference:	259357E 598170N	Horizontal field of view:	90° (cylindrical projection)	Camera:	Canon EOS 1ds Mk III
		Eye level:	792 m AOD	Vertical field of view:	14.2°	Lens:	50 mm f1.8
		Direction to centre of photograph:	231°	Paper size:	841 x 297 mm (half A1)	Camera height:	1.5 m AGL
		Principal distance:	522 mm	Correct printed image size:	820 x 130 mm	Date and time of photograph:	08/07/2024 23:00





Wireline drawing

View flat at a comfortable arm's length. If viewing this image on a screen, enlarge to full screen height.

South Kyle II Wind Farm
Figure 5.37e Viewpoint 13: Cairnsmore of Carsphairn (Night)

- Proposed development
- Turbine with visible aviation lighting

VATTENFALL

natural power

OS reference:
Eye level:
Direction to centre of wireline:
Principal distance:

259357E 598170N
792 m AOD
321°
812.5 mm

Horizontal field of view:
Vertical field of view:
Paper size:
Correct printed image size:

53.5° (planar projection)
18.2°
841 x 297 mm (half A1)
820 x 260 mm

Camera:
Lens:
Viewer height:
Date and time of photograph:

n/a
n/a
1.5 m AGL
n/a

Nearest South Kyle II turbine:
Minimum distance to South Kyle II:
Theoretical number of South Kyle II tips visible:
Theoretical number of South Kyle II hubs visible:

T10
9.2 km
11
11

© Crown Copyright 2025. All rights reserved.
Ordnance Survey Licence AC000088122



Photomontage (NB. The intensity of lighting is estimated and for illustration only)

View flat at a comfortable arm's length. If viewing this image on a screen, enlarge to full screen height.

South Kyle II Wind Farm
Figure 5.37f Viewpoint 13: Cairnsmore of Carsphairn (Night)



OS reference:	259357E 598170N	Horizontal field of view:	53.5° (planar projection)	Camera:	Canon EOS 1ds Mk III	Nearest South Kyle II turbine:	T10
Eye level:	792 m AOD	Vertical field of view:	18.2°	Lens:	50 mm f1.8	Minimum distance to South Kyle II:	9.2 km
Direction to centre of photograph:	321°	Paper size:	841 x 297 mm (half A1)	Viewer height:	1.5 m AGL	Theoretical number of South Kyle II tips visible:	11
Principal distance:	812.5 mm	Correct printed image size:	820 x 260 mm	Date and time of photograph:	08/07/2024 23:00	Theoretical number of South Kyle II hubs visible:	11

