

PORT OF LONDON

LONDON RIVER HOUSE, ROYAL PIER ROAD
GRAVESEND, KENT, DA12 2BG

NOTICE TO MARINERS

KENTISH FLATS WIND FARM EXTENSION – SEABED INVESTIGATION FOR VATTENFALL WIND POWER LTD

Commencing on or about 22nd August 2011, for a period of 4 weeks, one jack-up platform “Deep Diver” will be used for the drilling of test boreholes at various locations adjacent to the existing Kentish Flats Windfarm in the Outer Thames Estuary about 8km north of Herne Bay, Kent. The site location is shown on the attached location plan, FSCL1.

During normal weather conditions the borehole drilling will operate on a 24 hour / 7 day week basis.

The jack-up platform is equipped with a marine mast incorporating the internationally recognised signals for a vessel restricted in its ability to manoeuvre i.e. vertically mounted black ball over diamond over ball by day and red over white over red lights by night. By night, overhead, 3.5m high, 110v fluorescent lights illuminate the deck and surrounding outboard area. This allows safe 24 hour operations and makes our craft clearly visible to other mariners without interference to fixed navigation markers. Specification sheets are attached to this notice for the jack-up platform.

When the jack-up platform is operational it will have the standby boat “*MTS Vulcan*” with two people on board in attendance.

Mariners are requested to keep clear and pass slowly, particularly when the craft is afloat and manoeuvring.

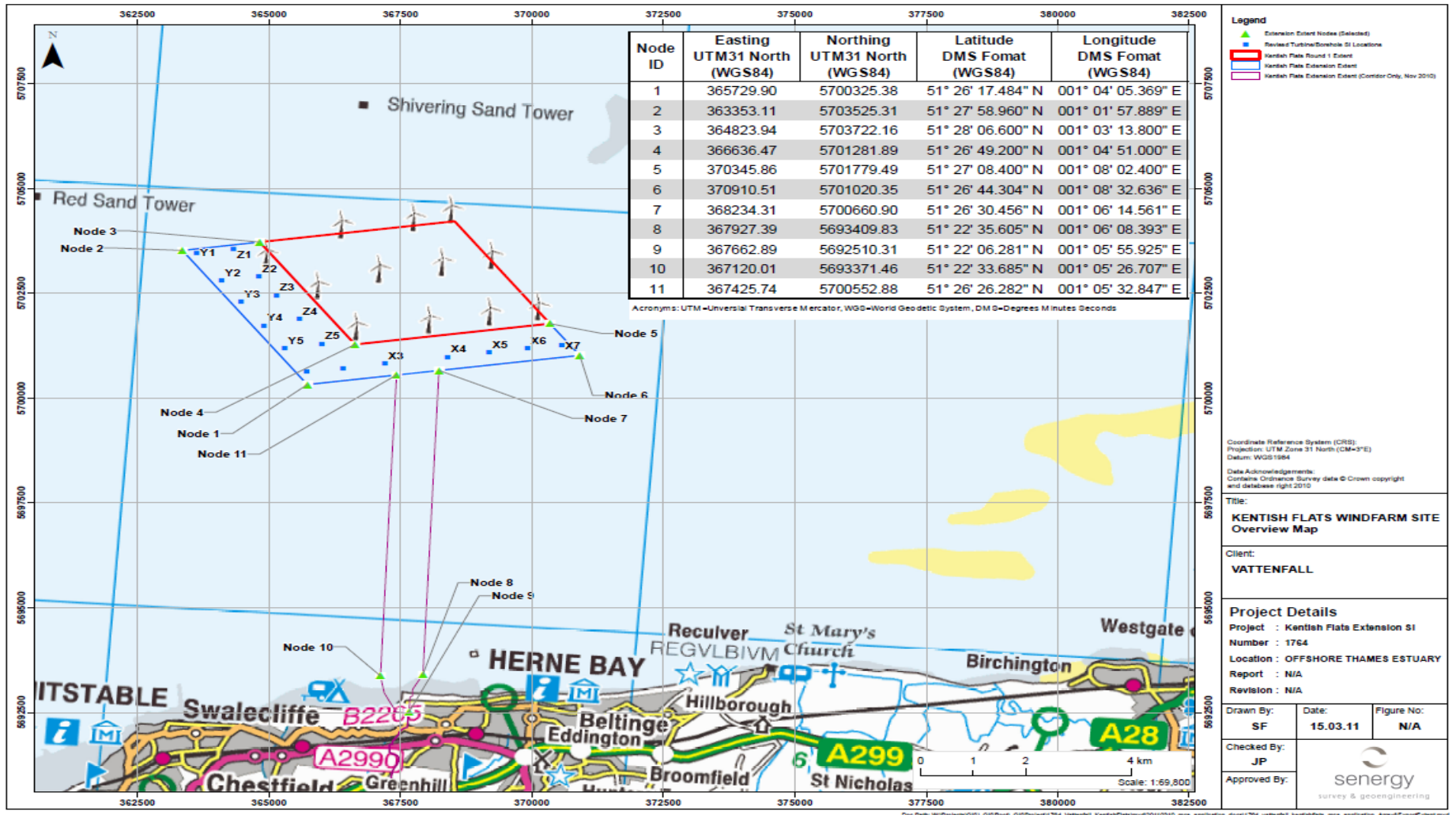
A listening watch will be maintained on VHF maritime channel 16.

Any questions in connection with the proposed works should be directed to:

Fugro Seacore Ltd
Bickland Industrial Park
Falmouth
Cornwall
TR11 4TA

Tel: 07733 126 264
Contact: Lori Prentice

This notice is self cancelling



Location Plan FSCL 1