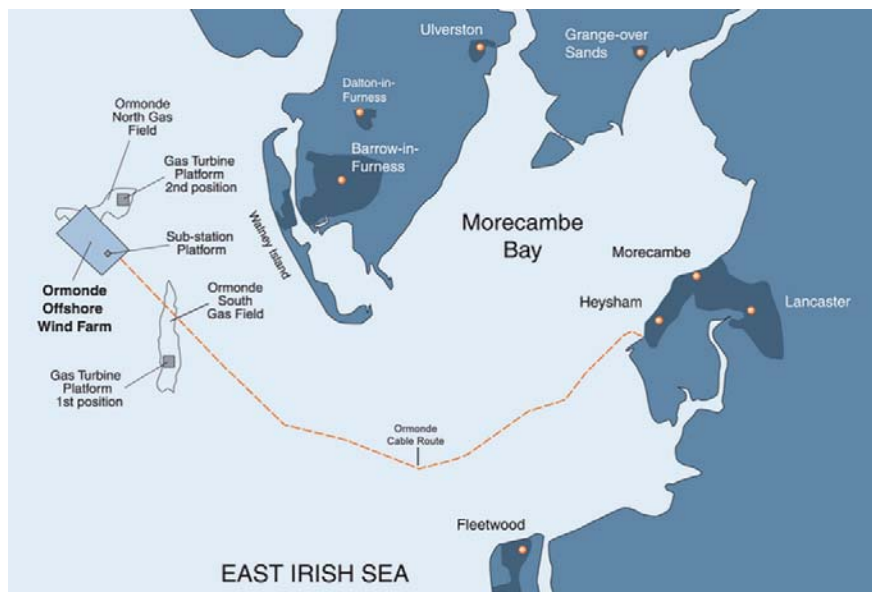


NOTICE TO MARINERS

Date of Notice 05/03/2011

No. 010 – 2011

ORMONDE OFFSHORE WINDFARM



Prepared By:
Gordon Bain
ODE Marine Coordinator
Ormonde Offshore Wind

1. Vessels on site

<i>Stemat Spirit</i>	Cable laying vessel
<i>Neptune 9</i>	AHT
<i>MPR2</i>	AHT
<i>MPR1</i>	AHT
<i>Windcat 23</i>	Crew Transfer Vessel
<i>Windcat 16</i>	Crew Transfer Vessel
<i>Stemat 82</i>	Cable laying vessel
<i>Lydia D</i>	AHT
<i>Neptune Mariner</i>	AHT
<i>Waterfall</i>	Crew Transfer Vessel
<i>Sea Rex</i>	Crew Transfer Vessel
<i>Styrbjorn</i>	Crew Transfer Vessel
<i>Sea Jack</i>	Jack-up Barge
<i>Sea Bever</i>	AHT
<i>Sea Golf</i>	AHT

2. Notice to ALL Vessels

It has been reported that there are polypropylene ropes hanging loose of some of the turbine positions. Mariners are urged to keep a close look out when accessing these locations

3. Wave Rider Buoy

54°05.50'N - 003°28.27'W

(As per attached chart)

All vessels are requested to keep a wide berth and to keep a sharp lookout.

4. Current Meter

54°05.50'N - 003°28.27'W

A current meter has been placed next to the wave rider buoy at the above coordinates.

All vessels are requested to keep a wide berth and to keep a sharp lookout

5. Wet Storage of Anchors

3.1 54°04.633'N - 003°25.993'W (Located in the Construction Zone)
(As per attached chart)

3.2 53°57.399'N - 003°05.843'W (Located at Danger Patch Buoy)

All vessels are requested to keep a 200m wide berth and to keep a sharp lookout

6. Pre-Piling Installation

All Piling completed (As per attached chart)

7. Jacket Installation.

All Jackets are installed

8. Cable Installation.

8.1 Export Cable

The **Stemat Spirit** accompanied by the AHT **Neptun 9** and **MPR2** are now at KP23 approximately halfway with the installation of the Export cable.

Notice is hereby given that due to weather conditions the cable has been surface laid from Half Moon Bay till KP8.5 (Positions below) and burial activities will take place as soon as weather permits. The Vessel **Glenravel** will guard the cable crossing and exposed cable between KP5 and Half Moon Bay.

Point 1:	54° 02.4938' N	2° 54.7132' W	<i>(437 metres from seawall Half Moon Bay)</i>
Point 2:	54° 02.5326' N	2° 54.9134' W	
Point 3:	54° 02.5605' N	2° 55.3091' W	
Point 4:	54° 02.4395' N	2° 55.7242' W	
Point 5:	54° 02.3360' N	2° 55.9005' W	
Point 6:	54° 02.1921' N	2° 56.1032' W	
Point 7:	54° 01.3027' N	2° 57.5535' W	
Point 8:	54° 01.0966' N	2° 57.8284' W	<i>(KP 5.000)</i>
Point 9:	54° 00.3267' N	2° 58.8832' W	
Point 10:	54° 00.2199' N	2° 59.1761' W	
Point 11:	54° 00.0184' N	3° 00.3026' W	<i>(KP 8.500)</i>

Co-ordinates are WGS 84 Latitude and Longitude (in degrees, minutes and decimal minutes).

8.2 Inter Array Cable

The **Stemat 82** accompanied by the AHT **MPR1**, **Lydia D** and **Neptune Mariner** left Barrow Port this morning to start the inter-array cable installation. The vessel Will start the campaign at D1-D2 then SSP to D1 following down the D string.

9. Turbine Installation.

Installation of the 30x5 Mega-watt turbines will commence in the next week.

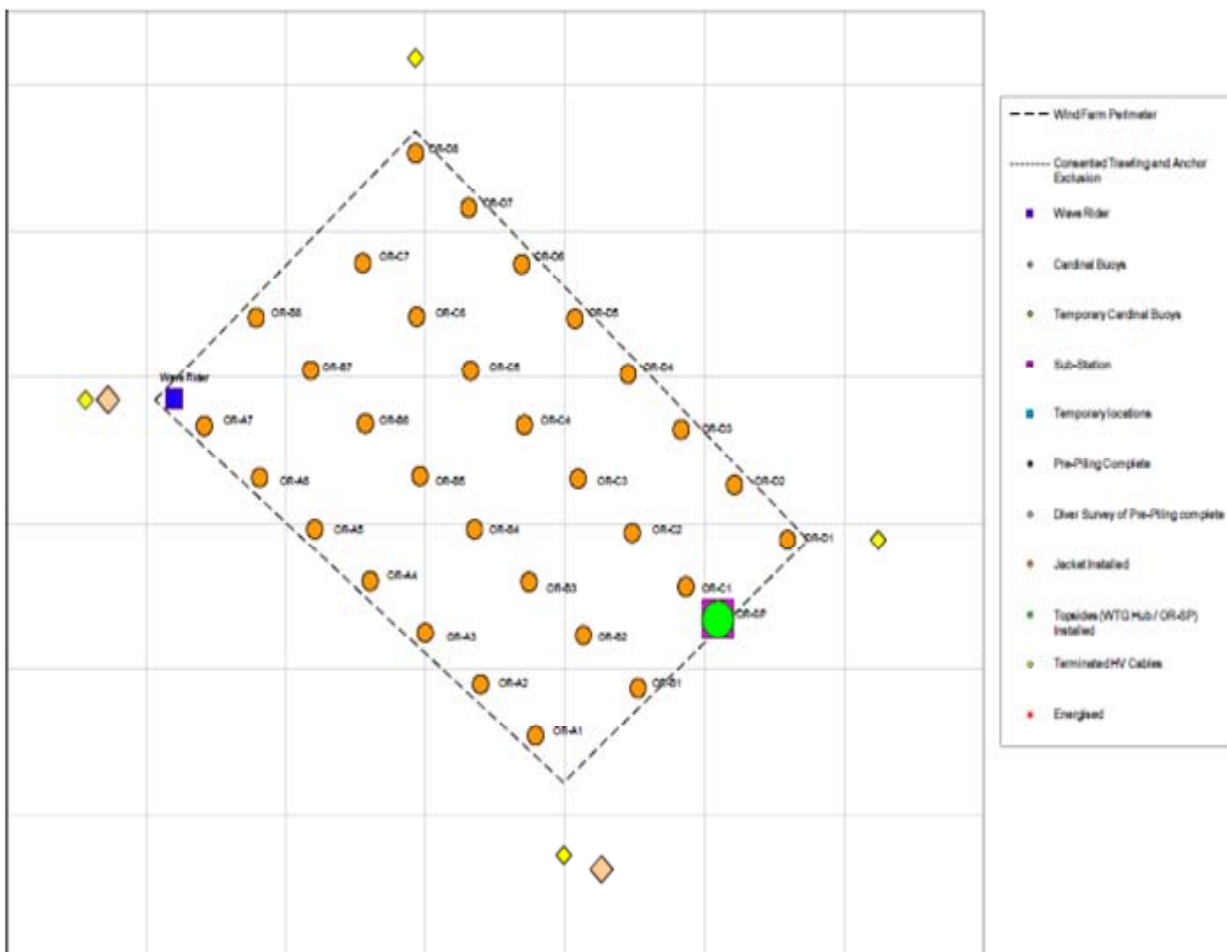
The **Sea Jack** accompanied by the AHT **Sea Golf** and **Sea Bever** will install turbines starting at Location D1.

The Barge will be transporting 2 turbines and nacelles at a time from Belfast Port.

10. Exclusion Zones

To maximize the safety of all life at sea, a 500 meter wide berth is requested from the installation vessels and a 100 meter wide berth from the installed locations.

INSTALLATION PROGRESS CHART



10. Installation Position List

Row 1 (Turbines 1 - 8)							
Turbine	Designation	Easting	Northing	Latitude (D M.mmm)	Longitude (D M.mmm)	Easting OSBG36	Northing OSBG36
1	OR-D1	473594.00	5992886.00	N 54 5.0093	W 03 24.2190	308273.12	466196.05
2	OR-D2	473213.29	5993264.43	N 54 5.2122	W 03 24.5701	307898.22	466579.39
3	OR-D3	472832.57	5993642.86	N 54 5.4151	W 03 24.9214	307522.84	466963.21
4	OR-D4	472451.86	5994021.29	N 54 5.6179	W 03 25.2727	307147.47	467347.04
5	OR-D5	472071.14	5994399.71	N 54 5.8207	W 03 25.6240	306772.09	467730.85
6	OR-D6	471690.43	5994778.14	N 54 6.0236	W 03 25.9754	306396.72	468114.68
7	OR-D7	471309.71	5995156.57	N 54 6.2264	W 03 26.3269	306021.34	468498.51
8	OR-D8	470929.00	5995535.00	N 54 6.4292	W 03 26.6784	305645.97	468882.33
Row 2 (Turbines 9 - 15)							
Turbine	Designation	Easting	Northing	Latitude (D M.mmm)	Longitude (D M.mmm)	Easting OSBG36	Northing OSBG36
9	OR-C7	470551.00	5994786.00	N 54 6.0240	W 03 27.0209	305257.36	468138.65
10	OR-C6	470936.83	5994415.83	N 54 5.8257	W 03 26.6648	305637.97	467763.01
11	OR-C5	471322.67	5994045.67	N 54 5.6274	W 03 26.3087	306018.59	467387.39
12	OR-C4	471708.50	5993675.50	N 54 5.4290	W 03 25.9527	306399.19	467011.75
13	OR-C3	472094.33	5993305.33	N 54 5.2307	W 03 25.5967	306779.80	466636.11
14	OR-C2	472480.17	5992935.17	N 54 5.0323	W 03 25.2408	307160.42	466260.48
15	OR-C1	472866.00	5992565.00	N 54 4.8339	W 03 24.8849	307541.03	465884.85
Row 3 (Turbines 16 - 23)							
Turbine	Designation	Easting	Northing	Latitude (D M.mmm)	Longitude (D M.mmm)	Easting OSBG36	Northing OSBG36
16	OR-B1	472523.00	5991874.00	N 54 4.4602	W 03 25.1957	307188.25	465198.67
17	OR-B2	472132.29	5992236.14	N 54 4.6542	W 03 25.5560	306802.65	465566.35
18	OR-B3	471741.57	5992598.29	N 54 4.8482	W 03 25.9163	306417.03	465934.03
19	OR-B4	471350.86	5992960.43	N 54 5.0422	W 03 26.2767	306031.43	466301.71
20	OR-B5	470960.14	5993322.57	N 54 5.2362	W 03 26.6371	305645.82	466669.39
21	OR-B6	470569.43	5993684.71	N 54 5.4302	W 03 26.9976	305260.22	467037.06
22	OR-B7	470178.71	5994046.86	N 54 5.6241	W 03 27.3582	304874.60	467404.75
23	OR-B8	469788.00	5994409.00	N 54 5.8180	W 03 27.7187	304489.00	467772.43
Row 4 (Turbines 24 - 30)							
Turbine	Designation	Easting	Northing	Latitude (D M.mmm)	Longitude (D M.mmm)	Easting OSBG36	Northing OSBG36
24	OR-A7	469415.00	5993668.00	N 54 5.4171	W 03 28.0565	304105.51	467036.68
25	OR-A6	469810.83	5993314.17	N 54 5.2277	W 03 27.6912	304496.35	466677.24
26	OR-A5	470206.67	5992960.33	N 54 5.0383	W 03 27.3261	304887.20	466317.79
27	OR-A4	470602.50	5992606.50	N 54 4.8488	W 03 26.9610	305278.04	465958.35
28	OR-A3	470998.33	5992252.67	N 54 4.6594	W 03 26.5959	305668.88	465598.91
29	OR-A2	471394.17	5991898.83	N 54 4.4699	W 03 26.2309	306059.73	465239.46
30	OR-A1	471790.00	5991545.00	N 54 4.2804	W 03 25.8660	306450.58	464880.02

Sub Station Platform							
Point	Designation	Easting	Northing	Latitude (D M.mmm)	Longitude (D M.mmm)	Easting OSBG36	Northing OSBG36
SSP	OR-SP	473095.00	5992345.00	N 54 4.7160	W 03 24.6737	307766.93	465661.60

Wind farm Perimeter							
Point	N/A	Easting	Northing	Latitude (D M.mmm)	Longitude (D M.mmm)	Easting OSBG36	Northing OSBG36
A		469062.69	5993842.41	N 54 5.5099	W 03 28.3807	303755.65	467216.07
B		470927.26	5995684.75	N 54 6.5099	W 03 26.6809	305646.34	469032.11
C		473744.22	5992886.45	N 54 5.0100	W 03 24.0812	308423.35	466194.38
D		471989.87	5991227.95	N 54 4.1101	W 03 25.6810	306645.97	464560.14

Ormonde Cable Route - Crown Estates Route February 2009							
Point		Easting	Northing	Latitude (D M.mmm)	Longitude (D M.mmm)	Easting OSBG36	Northing OSBG36
1 - SSP		473095,00	5992345,00	N 54 4.7160	W 03 24.6737	307766,93	465661,60
2		479798,61	5985790,86	N 54 1.2000	W 03 18.5000	314377,56	459013,06
3		483499,43	5982438,37	N 53 59.4000	W 03 15.1000	318031,06	455608,23
4		487430,83	5981498,89	N 53 58.9000	W 03 11.5000	321949,21	454613,16
5		492018,44	5979819,84	N 53 58.0000	W 03 7.3000	326513,01	452869,22
6		493330,74	5980003,21	N 53 58.1000	W 03 6.1000	327827,90	453034,05
7		494315,18	5980372,77	N 53 58.3000	W 03 5.2000	328817,57	453389,69
8		495190,15	5980742,65	N 53 58.5000	W 03 4.4000	329697,76	453747,21
9		498907,46	5983336,36	N 53 59.9000	W 03 1.0000	333451,72	456288,38
10		501201,60	5984078,12	N 54 0.3000	W 02 58.9000	335756,32	456997,70
11		502662,12	5985928,25	N 54 1.2974	W 02 57.5620	337242,97	458827,17
12		504475,10	5987788,82	N 54 2.3000	W 02 55.9000	339082,25	460662,09
13		504748,51	5988110,00	N 54 2.4731	W 02 55.6492	339360,19	460979,40
14 - MLWS		505262,43	5988314,88	N 54 2.5832	W 02 55.1781	339877,00	461177,00
15 - Dog Leg		506129,70	5988014,13	N 54 2.4205	W 02 54.3838	340740,00	460864,00
16 - Landfall		506186,69	5988014,94	N 54 2.4209	W 02 54.3316	340797,00	460864,00

Cardinal Buoys							
Point	Easting	Northing	Latitude (D M.mmm)	Longitude (D M.mmm)	Easting OSBG36	Northing OSBG36	
W Cardinal Buoy	468725,53	5993844,86	N 54 5.5100	W 03 28.6900	303418,51	467223,29	
S Cardinal Buoy	472260,07	5990632,73	N 54 3.7900	W 03 25.4300	306907,76	463961,08	
N Temp Cardinal Buoy	470927,26	5996184,75	N 54 6.7795	W 03 26.6838	305653,41	469532,13	
E Temp Cardinal Buoy	474244,22	5992886,45	N 54 5.0115	W 03 23.6226	308923,36	466187,31	
S Temp Cardinal Buoy	471989,87	5990727,95	N 54 3.8405	W 03 25.6782	306638,9	464060,12	
W Temp Cardinal Buoy	468562,69	5993842,41	N 54 5.5081	W 03 28.8394	303255,63	467223,14	

11. Contact Details

Please monitor VHF channel 12 / 16 while passing the offshore project location.

The project vessels utilize 158.0000 MHz PO as a working frequency.

For all marine related questions or queries,

Please contact the project marine coordination centre:

Duty Marine Coordinator

Duty Mobile: +44 (0) 7772 740498

Emergency Mobile: **+44 (0) 7796 156170**

E-Mail: traffic@ormondeenergy.co.uk

Ormonde Energy Limited

Belfast Berth ,Ramsden Dock Rd

Barrow in Furness, LA14 2TW

United Kingdom